

ORION®

INSTRUCTION MANUAL

OIL RADIATOR

ENGLISH

GB

Model:

OOR-0S7 (7 fins)

OOR-0S9 (9 fins)



DEAR CUSTOMERS!
MANY THANKS FOR BUYING ORION OIL RADIATOR!

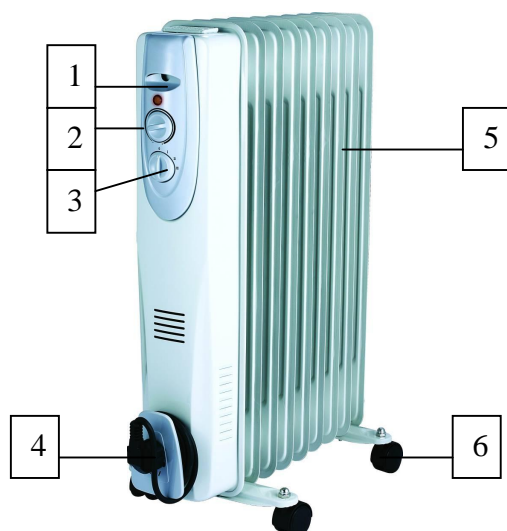
We really believe you will get the greatest pleasure from using this device for the years!

Please, read the user's guide in detail before first using of this oil radiator.

CAUTION

1. Read and save this instruction manual for further reading.
2. This appliance is not intended for use by persons (including children) with reduced physical, sensory or mental capabilities, or lack of experience and knowledge, unless they have been given supervision or instruction concerning use of the appliance by a person responsible for their safety.
3. Children should be supervised to ensure that they do not play with the appliance.
4. The product is for household use only.
5. Connect the appliance to single phase AC supply of the voltage specified on the rating plate.
6. In order to avoid overheating, **do not cover the heater**.
7. Never leave the heater unattended while it is in use. Always turn the product to the OFF position and unplug it from the electrical outlet when not in use.
8. Extreme caution is necessary when any heater is used by or near children, invalids or elderly person and whenever the heater is left operating and unattended.
9. Do not run cord under carpeting and do not cover cord with throw rugs, runners or the like. Arrange cord away from traffic area and where it will not be tripped over.
10. Do not operate the heater with a damaged cord or plug, or after the heater malfunctions, has been dropped, or damaged in any manner. If the supply cord is damaged, it must be replaced by the manufacturer or its service agent or a similarly qualified person to avoid a hazard.
11. Avoid the use of an extension cord as this may overheat and cause a risk of fire.
12. Use the heater in a well-ventilated area. Do not insert or allow objects to enter any ventilation or exhaust opening. To prevent a possible fire, do not block air intakes or exhaust openings in any manner. Do not use on soft surfaces, like a bed, where openings may become blocked. Use the heater on flat, dry surfaces only.
13. Do not place this heater near flammable materials, surfaces or substances, as there may be a risk of fire. Keep the above flammable materials, surfaces or substances at least 1m from the front of the product and keep them away from the sides and rear.
14. Do not use the heater in any areas where petrol, paint or other flammable liquids are stored e.g. Garages or workshops as a hot, arcing or sparking parts inside the heater.
15. Don't use this heater in the immediate surroundings of a bath, a shower or a swimming pool. Never locate the heater where it may fall into bathtub or other water container.
16. This heater is hot when in use. To avoid burns and personal injury, do not let bare skin touch hot surfaces. If provided, use handles when moving the product.
17. Be sure that no other appliances are in use on the same electrical circuit as your product as an overload can occur.
18. This heater is filled with a precise quantity of special oil.
19. Repair requiring opening of the oil container are only to be made by the manufacturer or his service agent who should be contacted if there is an oil leakage.
20. Regulations concerning the disposal of oil when scrapping the appliance have to be followed.
21. The heater should not be used in a room, of which the floor area is less than 5 M².
22. The cord shouldn't be placed nearby the hot surface of the appliance.

PARTS DESCRIPTION

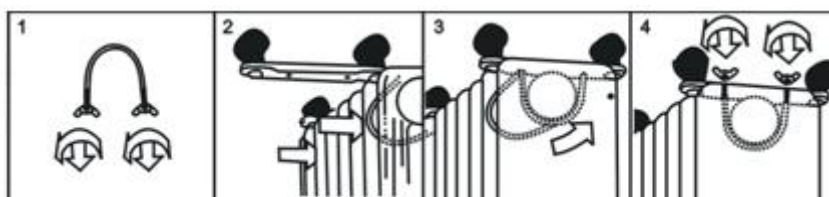


1. Carry handle
2. Thermostat knob
3. Power switch
4. Cord storage
5. Radiant fins
6. Castor

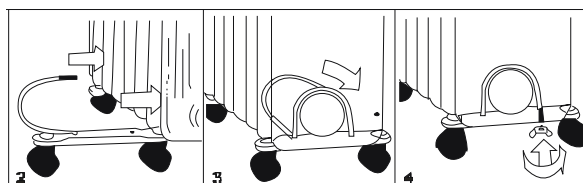
ASSEMBLY

The heater is packaged with the feet unattached. You must attach them before operating the heater.

WARNING: Do not operate without feet attached. Do operate the heater only in upright position (feet on the bottom, controls on the top), any other position could create a hazardous situation.



1. Turn the heater upside down.
2. Position the wheel base assemblies between the end fins.
3. Attach them to the heater using the U-bolts and wing nuts supplied.
4. Tighten the wing nuts.
5. Turn the heater the right way up.



OPERATION YOUR OIL RADIATOR

1. Place the heater on the floor at least 90 cm away from the wall and any other objects such as furniture, curtains or plants. (Make sure the power supply used corresponds to the one on the rating label).
2. Set all the controls to OFF position and insert the plug into a socket-outlet with well grounded. Be sure that plug fits firmly.
3. Rotate the thermostat knob clockwise to MAX position and switch the heater on as follow: the switch I for low heat, the switch II for medium heat and both switches on for high heat.

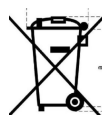
4. When your room reaches the desired temperature, now slowly rotate the thermostat knob counter clockwise until the pilot light goes out. The thermostat can now be left at this setting. As soon as the room temperature has dropped below the set temperature, the unit will switch itself on automatically until the set temperature has been reached again. In this way the room temperature remains constant with the most economical use of electricity.
5. If you want to change the room temperature setting, rotate the thermostat knob clockwise to raise the temperature, or counter clockwise to lower it.
6. This heater includes an overheat protection system that shuts off the heater when parts of the heater are getting excessively hot.
7. To completely shut the heater off, turn all the controls to OFF, and remove plug from the socket-outlet.

CLEANING AND MAINTENANCE

1. Always remove the plug from the socket-outlet and allow the radiator to cool down before clean the heater.
2. Wipe radiator with a soft damp (not wet) cloth.
WARNING:
Do not immerse the heater in water.
Do not use any cleaning chemicals such as detergents and abrasives.
3. To store away the heater, wind the cable round bobbin and store the heater in a clean dry place.
4. In case of malfunction or doubt, do not try to repair the radiator yourself, it may result in a fire hazard or electric shock.

TECHNICAL DATA

Model:	ORION OOR-0S7	ORION OOR-0S9
Fins:	7 fins	9 fins
Voltage:	220-240V 50Hz	220-240V 50Hz
Power:	600W/900W/1500W	800 W/1200W/2000W
Adjustable thermostat control:	+	+
Overheat protection system:	+	+
Fin size:	120x550 mm	120x550 mm
Indicator lights:	+	+
Smooth castors for easy movement:	+	+
Cord storage:	+	+
Net weight:	6,6 kg	8,3 kg
Gross weight:	7,5 kg	9,3 kg
Meas. (box):	37x13.5x63 cm	43.5x13.5x63 cm



This marking indicates that this product should not be disposed with other household wastes throughout the EU. To prevent possible harm to the environment or human health from uncontrolled waste disposal, recycle it responsibly to promote the sustainable reuse of material resources. To return your used device, please use the return and collection systems or contact the retailer where the product was purchased. They can take this product for environmental safe recycling.

Extra information on ORION company web-site www.orion.ua
We take your opinion and offers by E-mail support@orion.ua